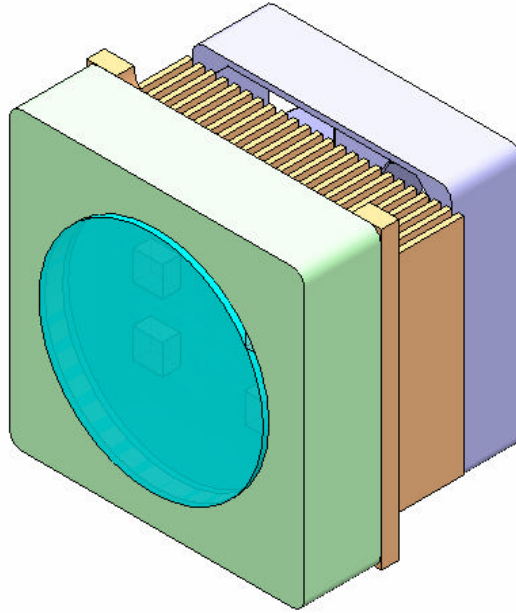


---

## High Power Laser Illuminator



### Key Features

- **High power output 3W (equivalent to 2,000 lumens)**
- **Beam Divergence: 20°, 50°, 100°**
- **Center wavelength: 808nm**
- **Optional wavelength: 976nm, 1064nm**
- **Narrow wavelength spread (1nm)**
- **Uses highly reliable Vertical Cavity Surface Emitting Laser technology**
- **Fan cooled.**
- **Operating temperature: -20 to 40°C**
- **Wavelength drift with temperature: 0.06nm/°C**
- **Compact size: 2.0 x 2.0 x 2.0 in**
- **Input power: 15W**