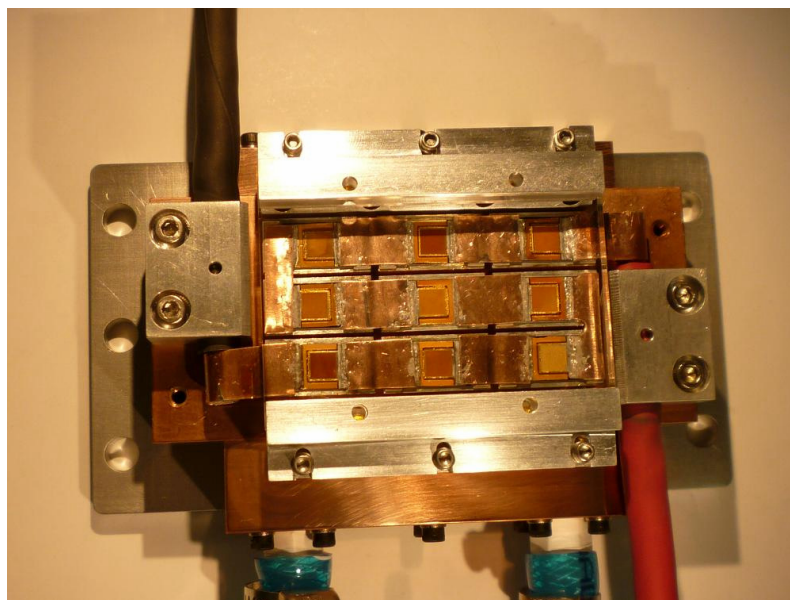


High Power Laser Illuminator



Key Features

- **High power output 400W (equivalent to 273,000 lumens, assuming 1 Watt= 683 lumens)**
- **Beam Divergence: 20 deg**
- **Center wavelength: 808nm**
- **Optional wavelength: 976nm, 1064nm**
- **Narrow wavelength spread (10nm)**
- **Uses highly reliable Vertical Cavity Surface Emitting Laser technology**
- **Reliable- field operable**
- **Operating temperature: -20 to 40°C**
- **Wavelength drift with temperature: 0.06nm/°C**
- **Dimensions: The dimensions of the module is 2.5x1.5x5.5"**

Applications: Area illumination, high speed photography, illumination for seeing through smoke, fog and dust clouds.